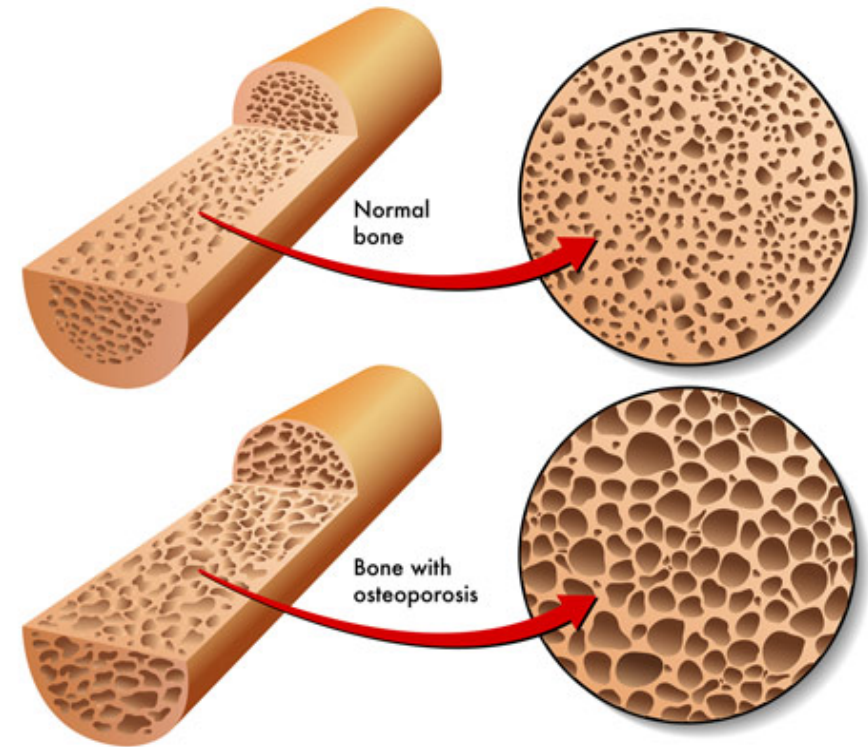


Unit 2: In-class Analysis

Miniproject 2 Info

- Background: Breastfeeding can lead to a temporary loss in bone density in mothers. While recent large studies have found no long term risk of osteoporosis from breastfeeding, health practitioners wish to understand how much bone density loss is possible in nursing mothers.
- Perform an analysis of data on bone density loss in nursing mothers to understand how much bone density loss occurs on average.



In-class Analysis Rules

- Due by 11:59pm this evening
- Do NOT share the password with anyone
 - if we catch you doing this you will be given a 0
- If you are ever gone for an in-class analysis, you can request the password through stat121-zoom@byu.edu but requests MUST come in BEFORE the deadline.
- You have 2 attempts to get them all right

Password

For today, our goal is to understand how much you students spend on food per week. Use the **student survey** data (your data) to figure out the mean amount that all BYU students spend on food per week. Questions are in the in-class analysis 2 assignment on LearningSuite.